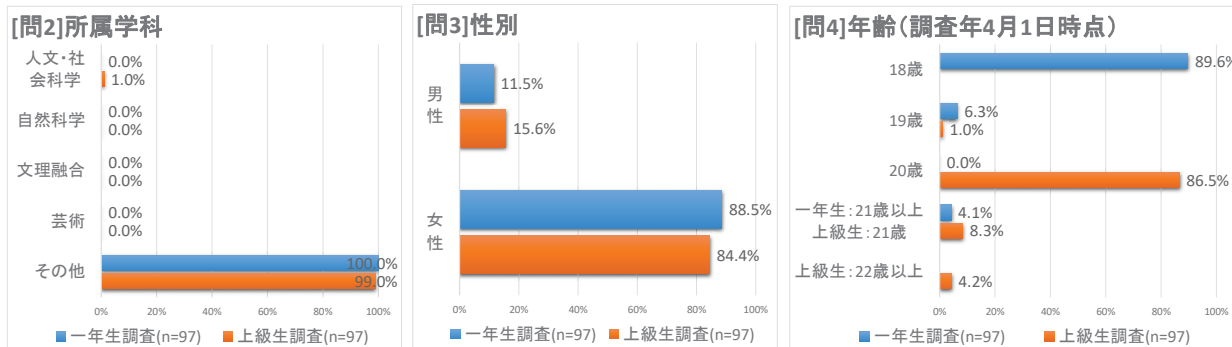
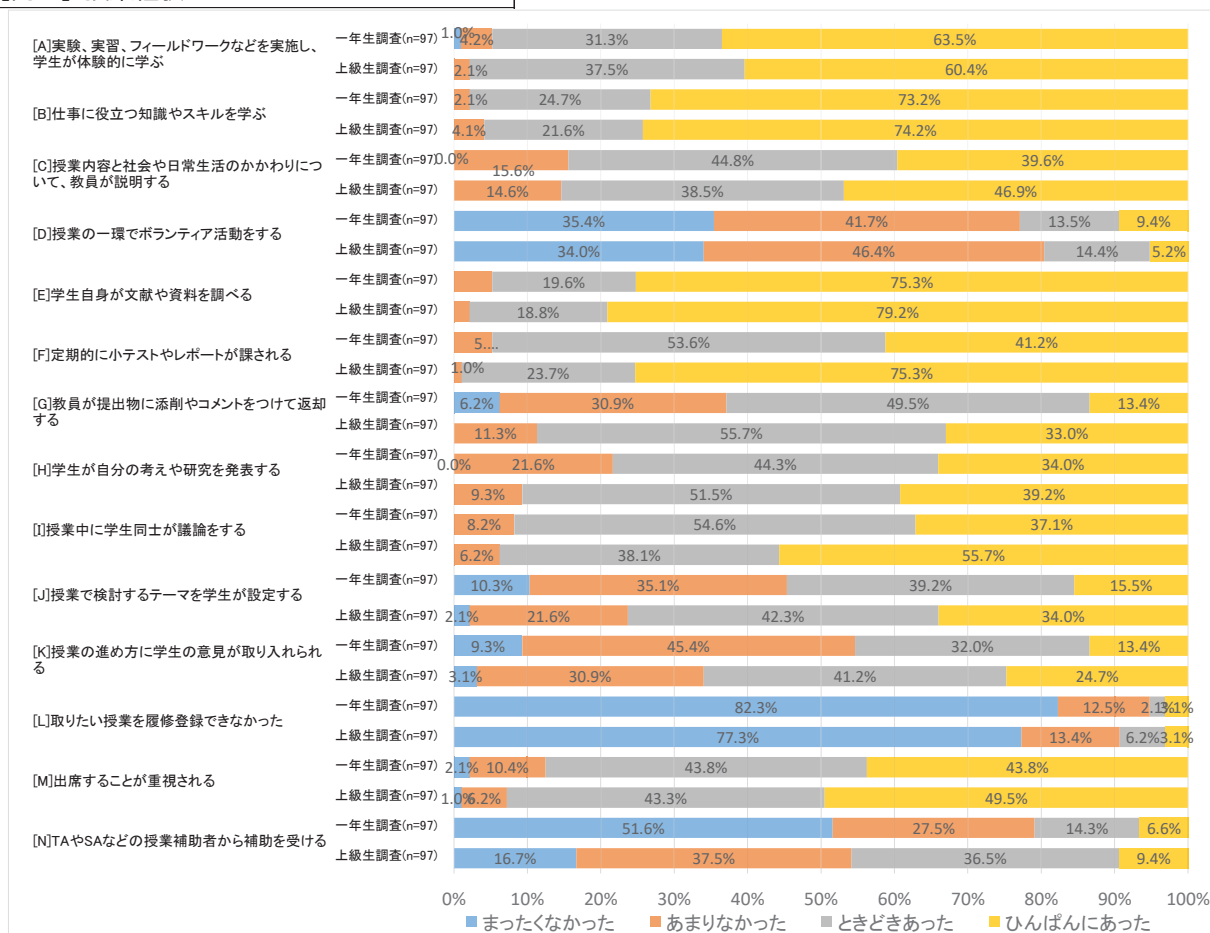


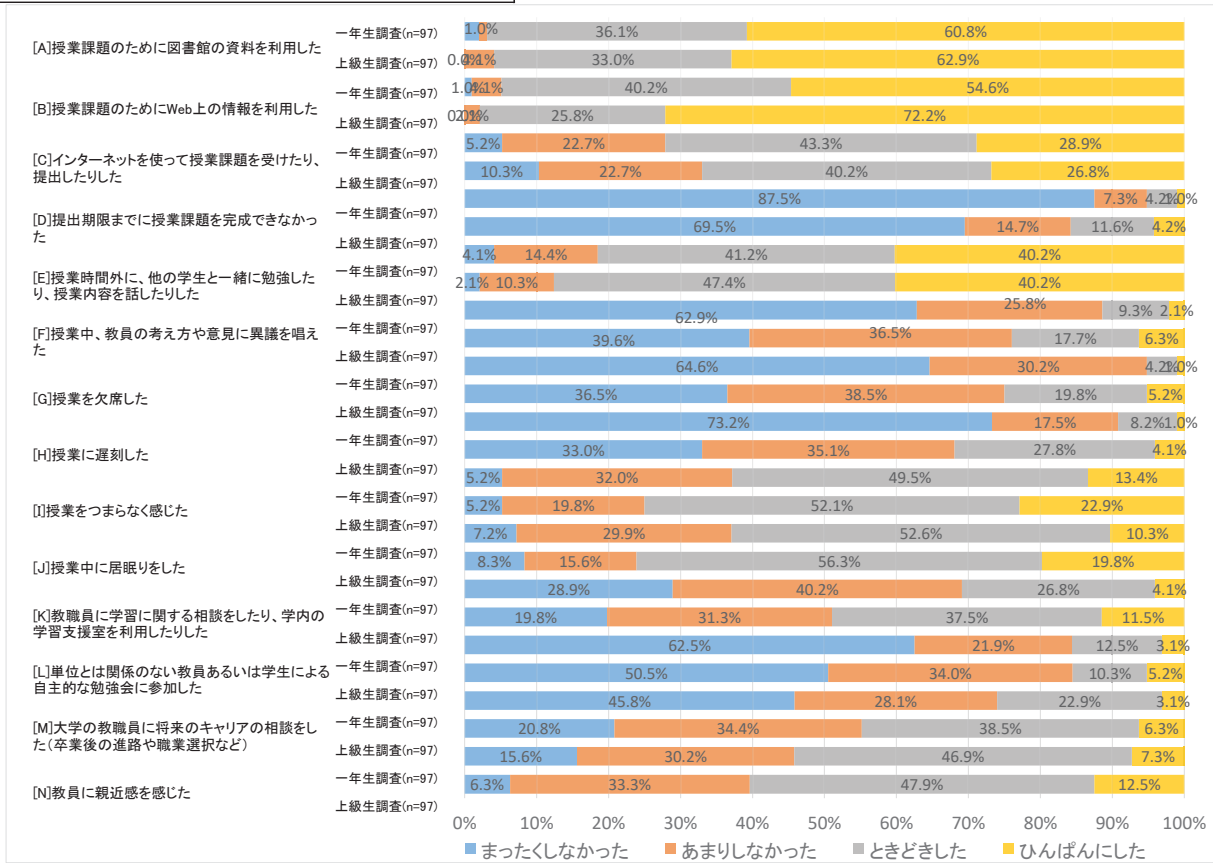
回答者の基本属性



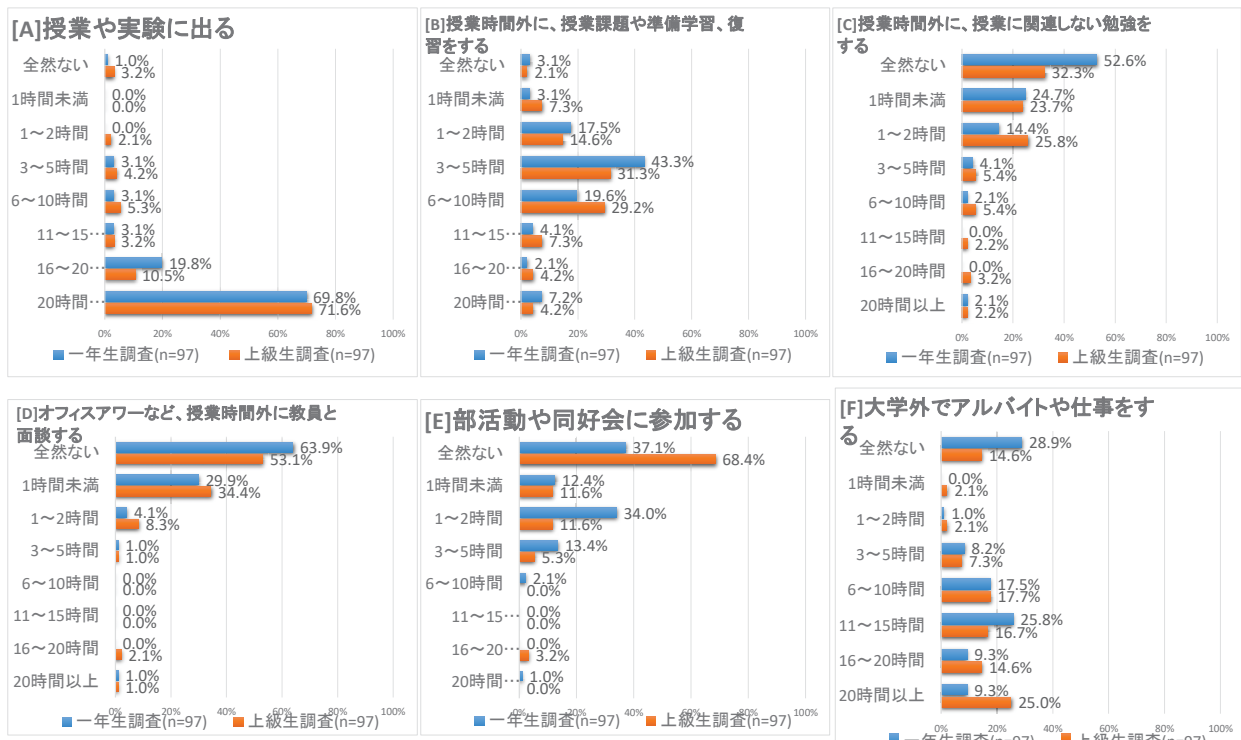
[問7] 授業経験

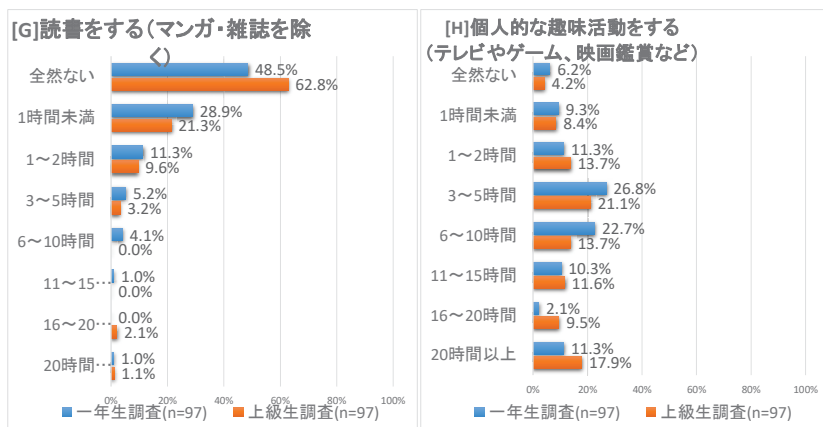


[問8] 授業内外における学習習慣

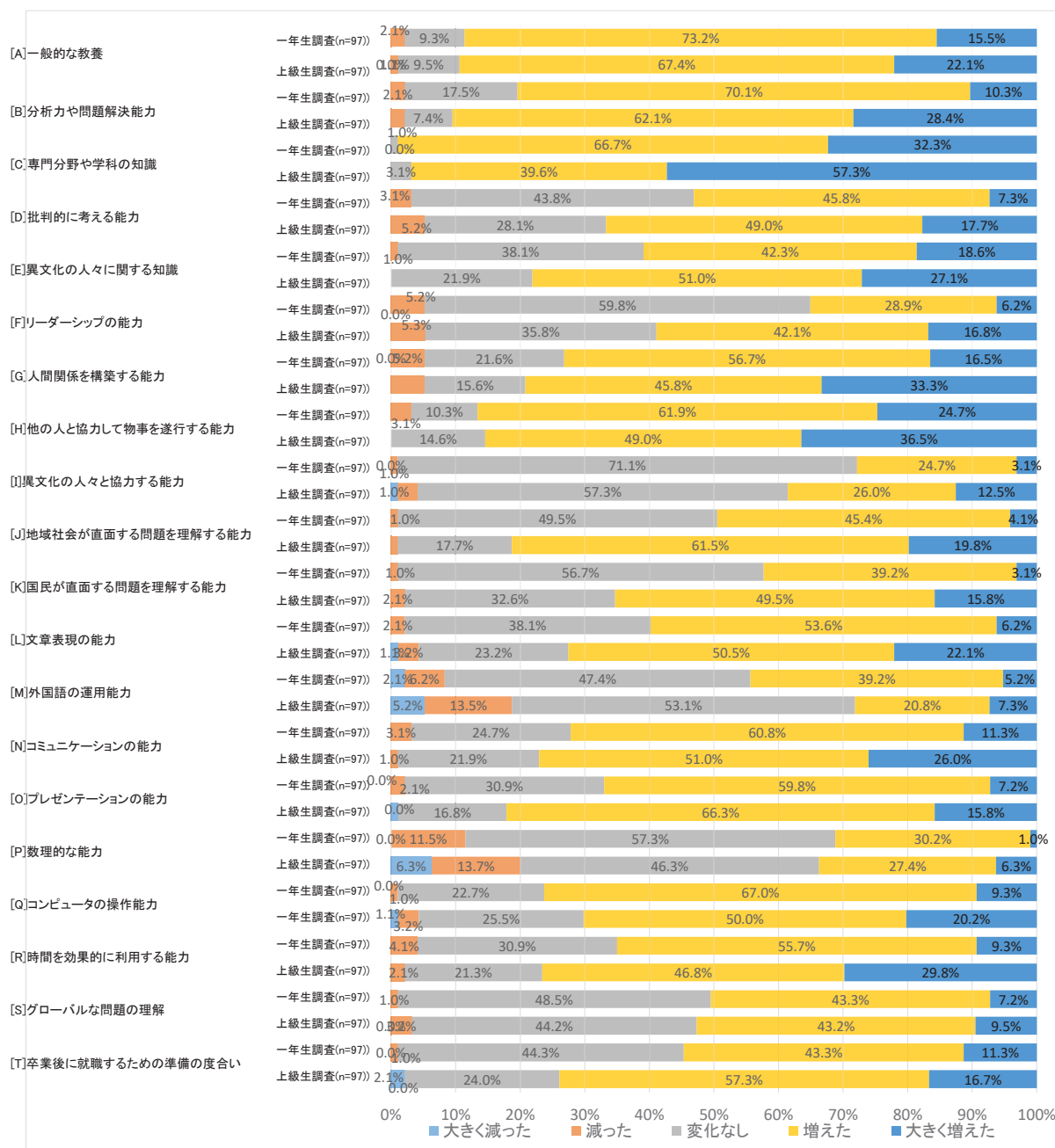


[問9] 1週間あたりの正課内外の活動時間

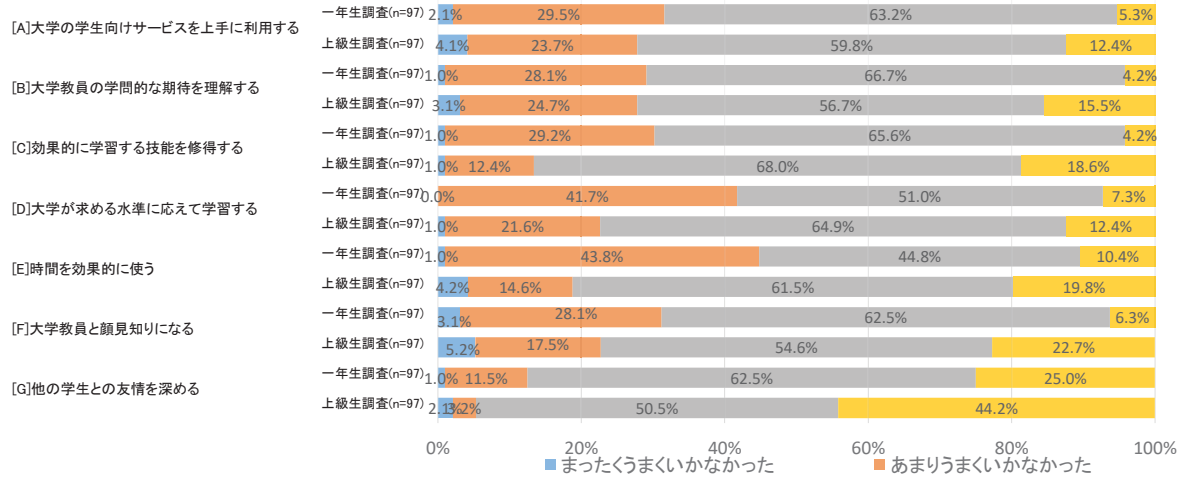




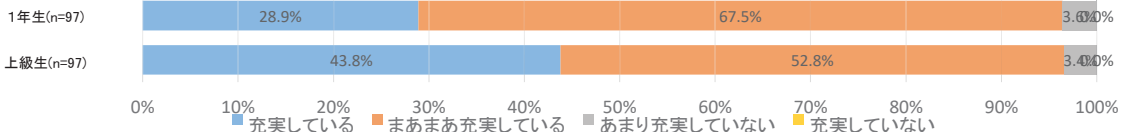
[問10] 入学後の能力・スキルの獲得状況



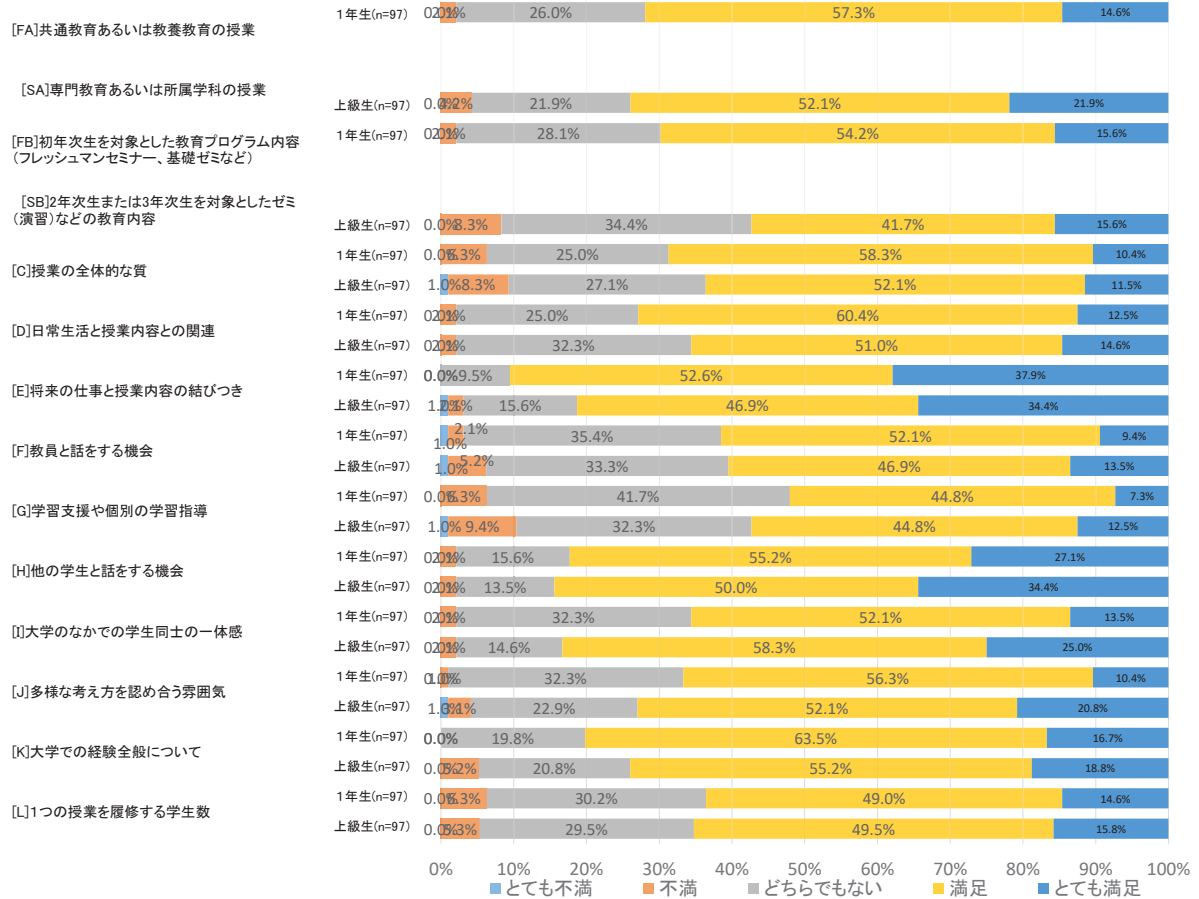
[問14] 大学生活への適応感



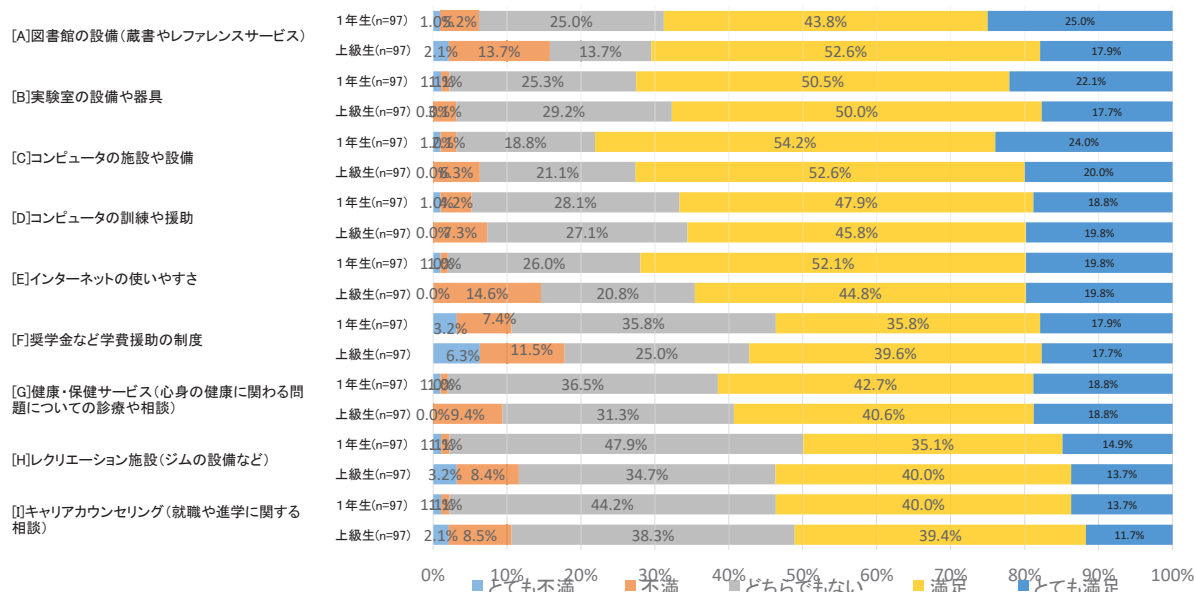
[問15] 学生生活の充実感



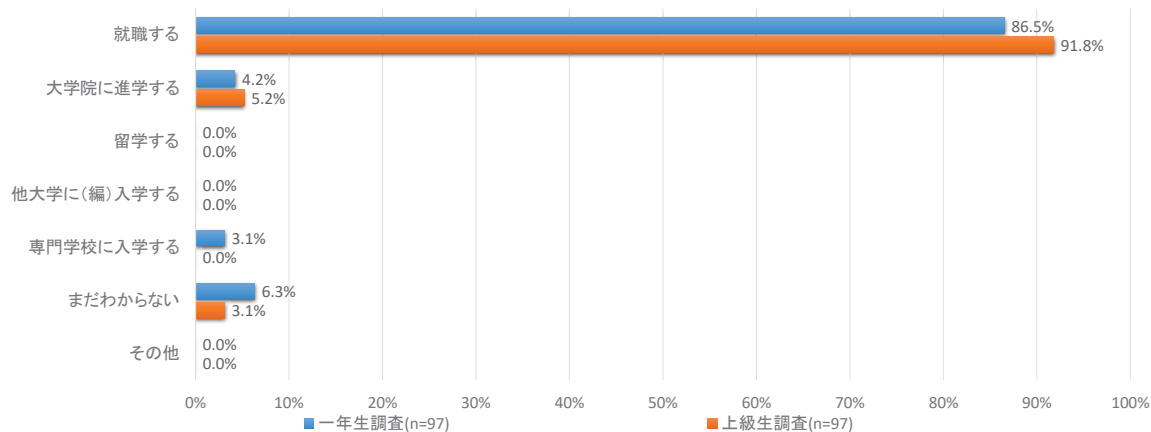
[問16] 大学教育に対する満足感



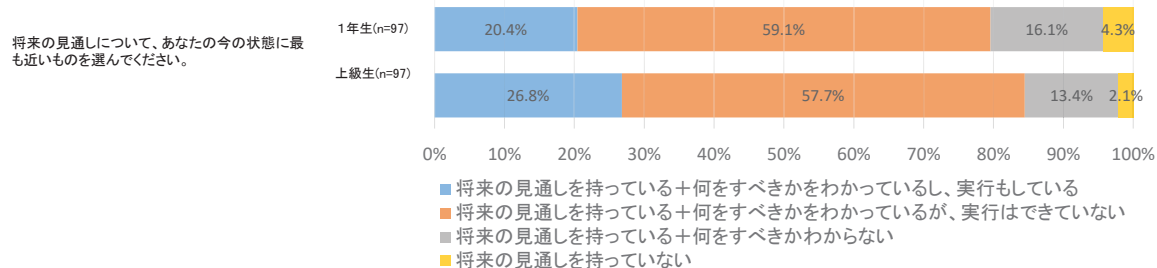
[問17] 設備、支援制度に対する満足感



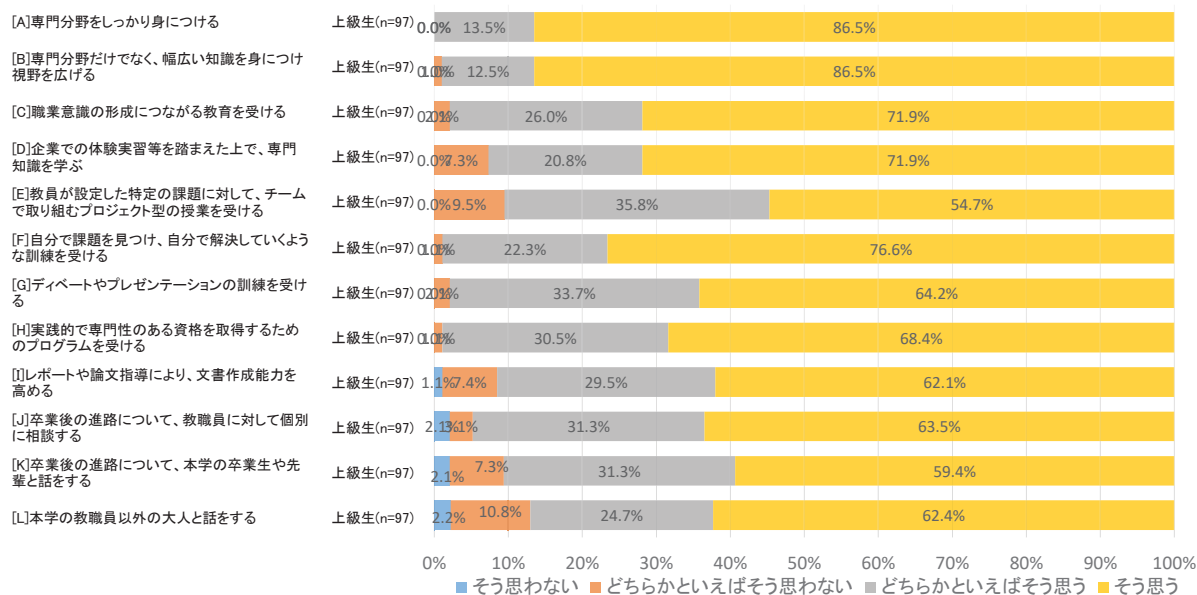
[問18] 学部卒業後の希望進路



[問19] 将来の見通し



[問20] 卒業後に備えて大学在学中に経験したいこと



[問24] 高校3年時の学習経験

